



RUBICON EXPRESS. 3290 MONIER CIR., RANCHO CORDOVA, CA. 95742 916-473-4600

## INSTALLATION INSTRUCTIONS FOR: RE8005 3.5" ZJ SUPER-RIDE SUSPENSION SYSTEM

### Safety Warning:

Suspension systems or components that enhance the off-road performance of your vehicle may cause it to handle differently, on and off-road, than it did from the factory. Care must be taken to prevent loss of control or vehicle rollover during sudden maneuvers. Failure to drive the vehicle safely may result in serious injury or death to driver and passengers. We recommend you always wear your seatbelt, drive safely and avoid quick turns and other sudden maneuvers. Constant maintenance is required to keep your vehicle safe. Thoroughly inspect your vehicle before and after every off-road use.

### Installation Warning:

We recommend that certified technicians perform the installations of our products. Attempts to install these products without knowledge or experience may jeopardize the safety of the vehicle. These instructions only cover the installation of our products and may not include factory procedures for disassembly and reassembly of factory components. Read instructions from start to finish and be sure all parts are present before disassembling the vehicle. Included instructions are guidelines only for recommended procedures and in no way are meant to be definitive. Installer is responsible to insure a safe and controllable vehicle after performing modifications. Do not perform test drives on public roads with partially completed installations. Always double and triple check your work before use.

### KIT CONTENTS:

RE1150	Rear sway bar end links
RE1171	Sway bar end link adapters (93-95)
OR	RE1172 (96-98)
RE1175	Front sway bar end links
RE1341	Front coil springs
RE1343	Rear coil springs
RE1604	Rear track bar bracket
RE3705	Lower front control arms
RE3720	Lower rear control arms

### REQUIRED TOOLS:

Basic mechanics' hand tools  
Jack stands and floor jack  
Spring compressors  
Drill motor and drill bits

### PRE INSTALLATION NOTE:

Control arm bushings are pre-lubed during initial assembly at Rubicon Express. As general maintenance the control arm bushings should be lubed with a silicone base grease as needed. Silicone base grease can be purchased at your local auto parts store.

### INSTALLATION:

**Note:** Lift heights of 3.5" may require a transfer case drop kit or modifications to the rear drive shaft – see slip yoke vibration in troubleshooting before proceeding.

1. Raise vehicle and support with stands.
2. Remove wheels.
3. Remove front shocks.
4. Remove front sway bar end links.
5. Remove front spring retainer clamps.
6. Disconnect front track bar at axle end. Disconnecting steering at pitman arm makes axle droop out farther.
7. Remove front springs. Spring compressors may be helpful.
8. Support the front axle with jack stands.
9. Remove factory lower control arms that are to be replaced.
10. Use factory eccentric hardware at front axle lower control arm mount.
11. Install the lower control arms with offset tube being mounted as low as possible (see photo 1). Use the factory bolt and nut at the uni-body mount (don't fully tighten bolts until vehicle is back on the ground).
12. The front springs are the longer ones. Coil spring compressors may be useful. Rotate the coil to index the spring with lower coil cup.
13. Install the spring retainer clamp removed in step #5.
14. Install longer front shocks. Bar pins may need to be put through the bottom shock eyes (use light grease).
15. Install sway bar end link adapters per instructions supplied with adapters. Install sway bar end links (see photo 2 for typical installation).
16. Re-drill front track bar axle bracket over toward driver's side  $\frac{3}{4}$ ", center-to-center (or install optional adjustable front track bar). Reconnect track bar at new hole.

#### -REAR AXLE-

17. Remove the rear shocks.
18. Remove the rear sway bar end links.
19. Support the rear axle.
20. Disconnect rear track bar at axle.
21. Remove the factory lower control arms that are to be replaced.
22. Remove the rear springs.
23. Remove the plastic dust shield that covers the bolt securing the rear track bar to the mount on the axle housing and discard.
24. Remove the Torx head bolt (t155) and disconnect axle end of track bar, if not done previously
25. Install track bar bracket using the supplied  $\frac{1}{2}$ " bolt and spacer (the spacer goes in the location vacated by the track bar to prevent the bracket from deforming when the bolt is tightened- see photo 3 for similar installation).
26. With the track bar bracket in place, drill two 5/16" holes in the axle mount where the plastic dust shield was previously located, one on top and one on angled surface.
27. Install the 5/16" hardware in the holes drilled in step #27. If required, use supplied horseshoe shim to take up space between bracket and axle mount at top 5/16" bolt.

28. Install the track bar in the track bar bracket using the Torx bolt removed in step #25. It may be easier to do this later with weight on the vehicle.
29. Set rear lower control arm length to 17.25" (center hole to center hole), for 3.5" lift. Install the lower control arms with the offset tube at the axle and as low as possible (see photo 4). Use the factory hardware (don't fully tighten until vehicle is back on the ground).
30. Install springs. Spring compressors may be helpful.
31. Install replacement sway bar end links.
32. Install longer rear shocks.
33. Install all tires.
34. Double-check all nuts and bolts to factory torque specs.
35. Test drive and note location of steering wheel. Adjust drag link to center steering wheel.
36. Align vehicle as soon as practical. A good rule of thumb is minimum factory caster and maximum factory toe-in.
37. Recheck all bolts after 50 miles and again after every off road excursion.



< AXLE END (TUBE OFFSET DOWN) - PHOTO 1 – FRAME END >



PHOTO 2

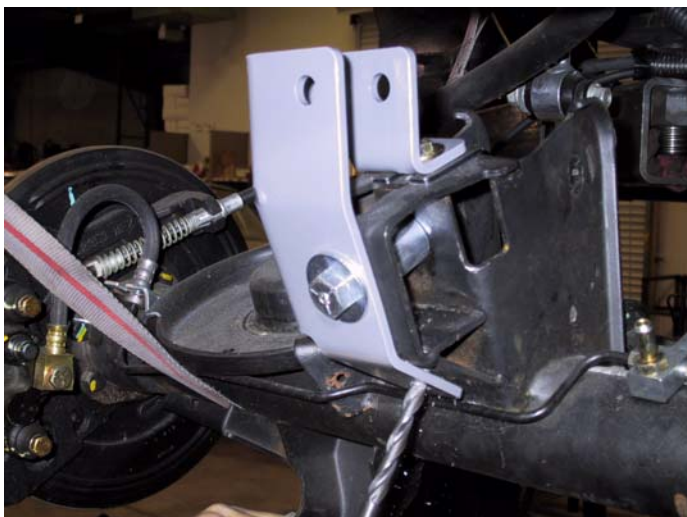


PHOTO 3



< UNI-BODY END – PHOTO 4 – AXLE END (TUBE OFFSET DOWN) >

## TROUBLESHOOTING

### **Rear driveline:**

Acceleration vibration: Caused by the pinion being too high in relation to the transfer case output shaft. Adjust lower control arm to lower pinion accordingly.

Deceleration vibration: Caused by the pinion being too low in relation to the transfer case output shaft. Adjust lower control arm to raise pinion accordingly.

Slip yoke vibration: Caused by excessive angle on the transfer case slip yoke. Very common on vehicles with 2" or more of lift. This can usually be cured on 3.5" lifts with a transfer case drop kit. Note that pinion adjustment may also be required - see acceleration and deceleration vibration troubleshooting above. For best performance, consider a slip yoke eliminator (SYE) kit and CV drive shaft (note that upper rear adjustable control arms will be required for adjusting pinion angle for CV type shaft). Adjust pinion so it is 2 degrees below parallel with CV drive shaft (see acceleration and deceleration vibration troubleshooting above). *A transfer case drop kit can usually be omitted with a CV drive shaft.*

### **High speed wobble:**

This is fairly common with y-type steering on lifted ZJ's. It is a condition where front tires will shimmy after hitting a bump. Avoid bias ply tires and wheels with excessive offset. Check for worn or loose parts. In most cases a reduction of positive caster will eliminate this condition. A good rule of thumb is minimum factory caster and maximum factory toe in. Note that lift heights increased with coil spacers (or taller coils) may exhibit wobble that cannot be corrected with alignment.

### **Bump steer:**

Caused by improper relationship of drag link and track bar. To correct, center axle again following the instructions supplied with the track bar. Next determine the neutral position of the steering wheel. Adjust the drag link to center the steering wheel.